

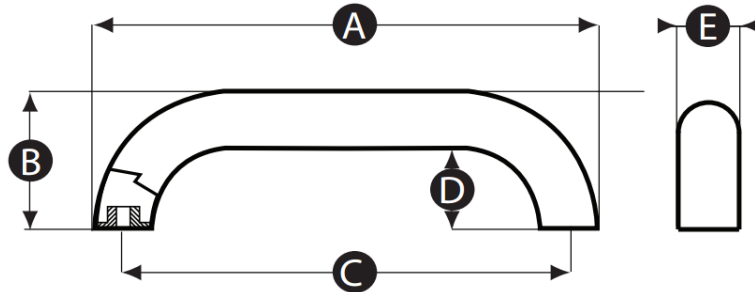
## G15BH Stainless Steel Polished Bridge Handle

### Features

- Electro polished stainless steel bridge handle
- Welded base plate with machined threads for fixing with screws from below

### Material

- Body: Stainless steel, electro polished
- Thread: Machined thread



Part No.	A	B	C	D	E	Thread Size
G15BH-12562P	220	60	195	34	25	M6
G15BH-12563W	325	75	300	46		

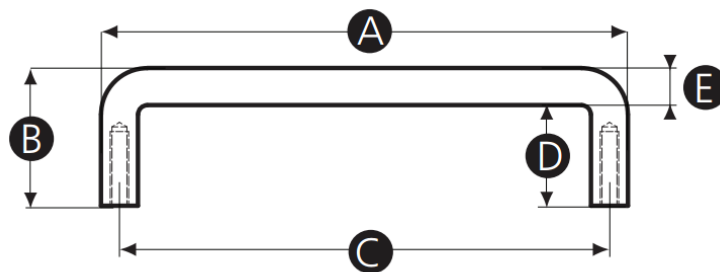
## G21BH Polished Steel Bridge Handle

### Features

- Polished stainless steel pull handle
- Machined threads for fixing with screws from below
- Includes stainless steel fixing screws

### Material

- Body: Stainless steel, polished
- Thread: Machined thread



Part No.	A	B	C	D	E	Thread Size
G21BH-15539Y	114	30	106	22	8	M4